

HOW WE WORK

Housed within the Department of Natural Resources & the Environment at Cornell University and established in 2008, the New York Invasive Species Research Institute (NYISRI) serves as a bridge between the invasive species science and management realms. With funding provided through the Environmental Protection Fund as administered by the New York State Department of Environmental Conservation (NYSDEC), and organizational support from Cornell University, NYISRI works to advance invasive species knowledge and improve the scientific basis of management in the following ways:



Identify on-the-ground research needs of invasive species managers



Coordinate research to address current priorities and needs



Organize and participate in conferences, networks, workshops, and working groups



Foster new collaborations among universities, agencies, and organizations



Identify and secure funding as well as advocate for policies to support initiatives

GET INVOLVED

Our success is dependent upon the expertise and collaboration of our partners. We are always seeking to learn about new research, manager needs, and ways to create synergies among them. Contact us or visit our website to learn more and join our growing network.

STAY UP-TO-DATE

Subscribe to our monthly newsletter: send an email to nyisri-l-request@cornell.edu with the subject "join" to be notified of the latest invasive species research and initiatives.

Follow us on social



@NYInvasives



@NY_ISRI



@NYInvasives

nyisri@cornell.edu

www.nyisri.org



Cornell CALS
College of Agriculture and Life Sciences



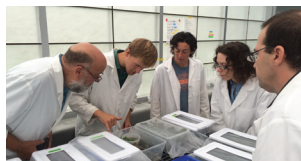
CONNECTING INVASIVE SPECIES RESEARCH AND PRACTICE

In recognition of the threat that invasive species pose to New York's diverse natural, historic, cultural, and recreational resources, New York has established a statewide network dedicated to managing and mitigating invasive species impacts. The New York Invasive Species Research Institute (NYISRI) works within this network to bridge the gap between invasive species research and practice.

NY Invasive Species Research Institute
216 Fernow Hall
Cornell University
Ithaca, NY
www.nyisri.org

CREATING PARTNERSHIPS

A core role of NYISRI is to promote communication and collaboration between scientists, land managers, and policy makers to bridge the gap between research and implementation. NYISRI works closely with the eight Partnerships for Regional Invasive Species Management (PRISMs), the NYSDEC, iMap Invasives, and many other organizations, agencies, and universities. We are always seeking to expand our network and partnerships.



Host-specificity testing for water chestnut biocontrol at Cornell University.



Invasive jumping worm, *Amyntas agrestis*.



Conservation detector dog monitoring for spotted lanternfly at a vineyard.

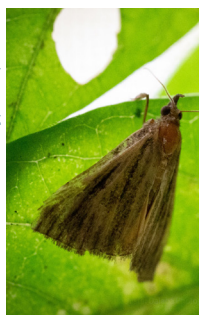
ADVANCING INTERDISCIPLINARY APPROACHES

NYISRI brings together professionals of varying disciplines. These include, but are not limited to, computer scientists, DNA researchers, conservation dog programs, decision scientists, and economists, to explore innovative ways of preventing, detecting, and managing invasive species across New York State.



NYISRI staff and partners in the field setting up test cages for *Hypena opulenta* biocontrol outreach.

LONG-TERM SOLUTIONS



Swallow-worm biocontrol, *Hypena opulenta*.

Biological control is one of the only long-term sustainable solutions to address widespread invasive species. NYISRI works closely with researchers, extension staff, and managers to support the development and implementation of biocontrol programs.



INVASIVE SPECIES & CLIMATE CHANGE

Climate change and invasive species profoundly influence Northeast ecosystems. How will we manage these complex and compounding threats today and into the future? NYISRI, together with faculty at UMass Amherst and the Northeast Climate Adaptation Science Center, founded the [Northeast Regional Invasive Species and Climate Change Management Network](#) to address this pressing question. The RISCC leadership team regularly meets to share research and provide resources to over 500 members engaged in management challenges.

INFORMING MANAGEMENT

Across New York State, decisions are being made about what, where, and how to manage invasive species. To improve the consistency and efficacy of these decisions, NYISRI is working with partners to develop and utilize:

- An interactive online decision tool for management in New York
- Protocols and metrics to measure effectiveness and success of management in natural areas
- A standardized and repeatable methodology to gather research needs based on stakeholder input

PROMOTING SCIENCE-BASED POLICY

NYISRI provides updates and recommendations on recent research findings to the New York Invasive Species Council, helping promote and support scientifically sound decisions on current and emerging issues.



Dr. Bernd Blossey releasing an approved Japanese knotweed biocontrol agent.



NYISRI Director, Carrie Brown-Lima sharing opening conference remarks.